

# Bayfront Quest

**Established:** July 2009 by Alexis, Alyssa, Carlos, Ciana, Connor, Dyana, Emma, Faith, Gavin, Killian, and Taco, with help from Laura and Cait. Rhymes created July 2010 by Laura, Mike, and Brennan Archer.

**Box Monitor:** The Port of Newport

This Quest takes place at Newport’s historic bayfront, and it highlights the local commercial fishing industry. Students (ages 10–12) attending a Quest-building day camp at the Hatfield Marine Science Center created the Quest route and directions. The Archer family provided the rhyming verses. We would like to thank the Port of Newport, Local Ocean Seafoods, Oregon Sea Grant Extension, and Schiewe Marine Supply for the tours and interviews they gave that helped us learn about the working waterfront.

The Bayfront Quest traverses level boardwalks and paved sidewalks, and takes about 45 minutes, round-trip, to complete. To begin, park in the public lot behind the Mariner Square shops, or along Bay Blvd., near Port Dock 1. Follow the directions and collect the letter clues to fill the numbered squares on the last page of this quest.

Visit [seagrants.oregonstate.edu/quests](http://seagrants.oregonstate.edu/quests) for a Spanish version of this Quest!

## Let’s begin!

Walk through the arch to Port Dock 1  
Here you’ll find lots of fun.  
Look over the edge; what do you hear?  
Find big marine mammals near this pier.

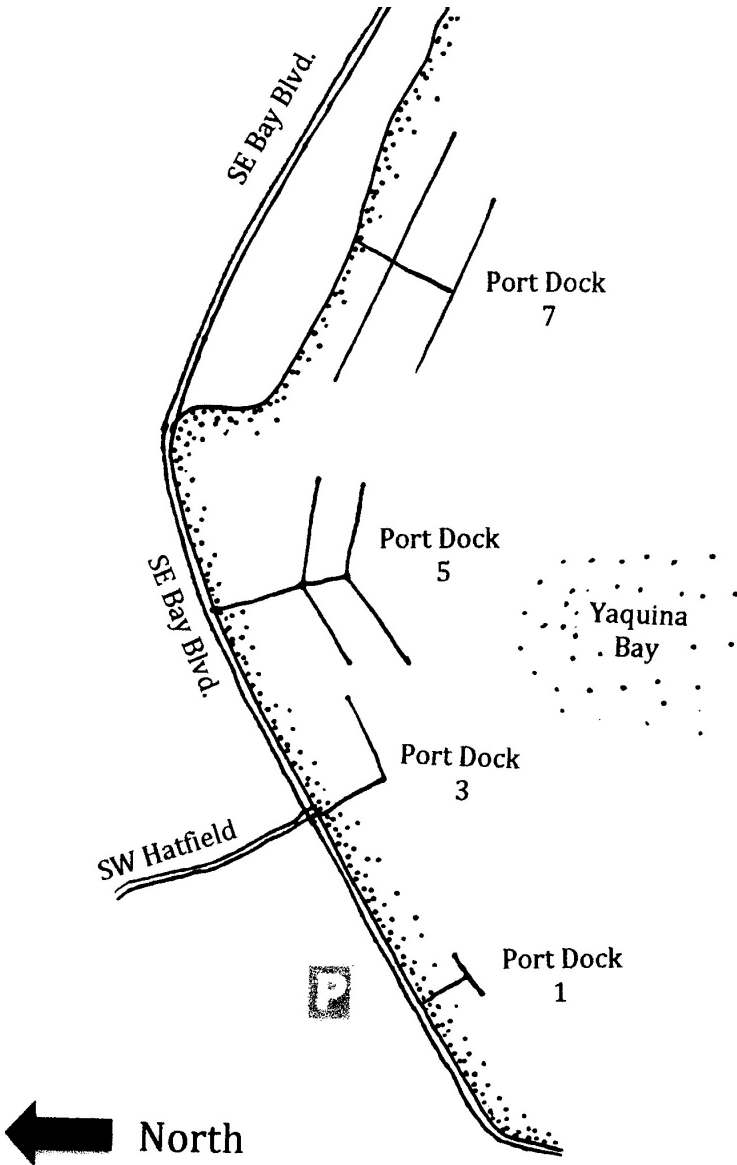
What mammals are these,  
Trying to soak up the sun?  
Read the signs, please.  
Your Quest has begun.

### *QUESTION for the Curious*

*What’s the difference between sea lions and seals?*

*The answer to this and other questions are in the Quest Box at the end of your journey!*

Use this map to help you solve the Quest. Follow the directions and collect the letter clues to fill the numbered squares on the last page of this Quest. The message you complete will help you find the hidden Quest box.



**Quest Partners**

- HMSC Summer Camps ● Oregon Sea Grant Extension ●
- Port of Newport ● Local Ocean Seafoods ● Schiewe Marine Supply



The first letter of the state  
From which they come  
Happens to be your  
Clue number 1.

Look closely, and you will see  
A forehead bump called a sagittal crest.  
It forms on males at least 5 years old,  
Younger than that, no bump—no jest!

Go back to the street  
And cross where it's best  
(in the crosswalk, of course!).  
Now continue your Quest.

Go right and walk toward big trees,  
Then look up to your right.  
High up on the wall  
Will be such a sight!

A whale of a tale  
Is painted on the wall.  
What is its name?  
Can you recall?

The artist signed the painting,  
As is typical to do.  
The first letter of his name  
Is clue number 2.

Continue past buildings  
Colorful and bright.  
Part of the “working waterfront”  
Can be seen on your right.

Small, mighty vehicles  
Carry loads and make tracks  
From the buildings to trucks  
Awaiting fish packs.

The blue buildings are  
Where they process the fish.  
Boats bring it to sell  
To markets, and then to your dish!

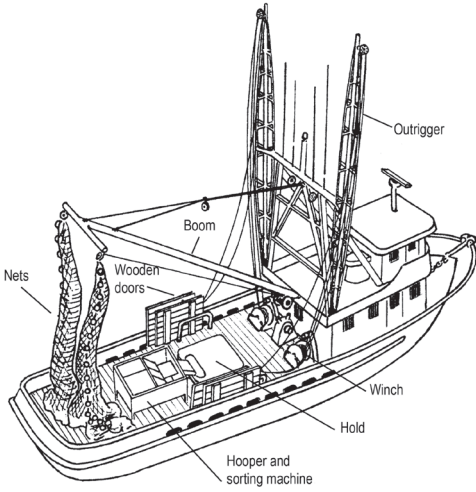
Some fish is frozen,  
Some is bought fresh;  
Some is used as bait,  
And we eat the rest.

Cross SW Hatfield Drive.  
Turn right and cross Bay.  
Look down the alley;  
What does that sign say?

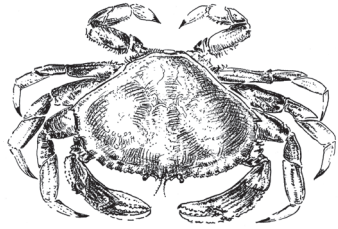
FRESH CRAB, it is here;  
But what kind, do you think?  
Newport is famous for  
This crab that turns pink.

*Different types of boats are specialized to catch different types of seafood. Draw a line to match the animal to the vessel that catches it. Look along the docks to see if you can see these boats.*

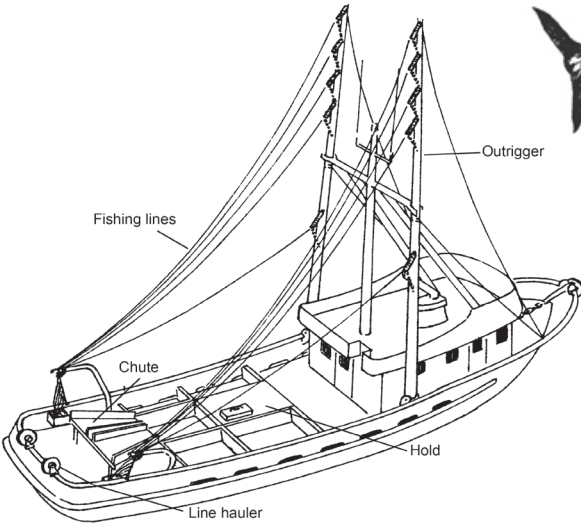
**A - Double-rigged shrimp trawler**



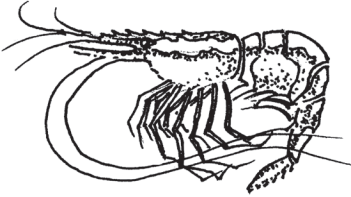
***Dungeness Crab***



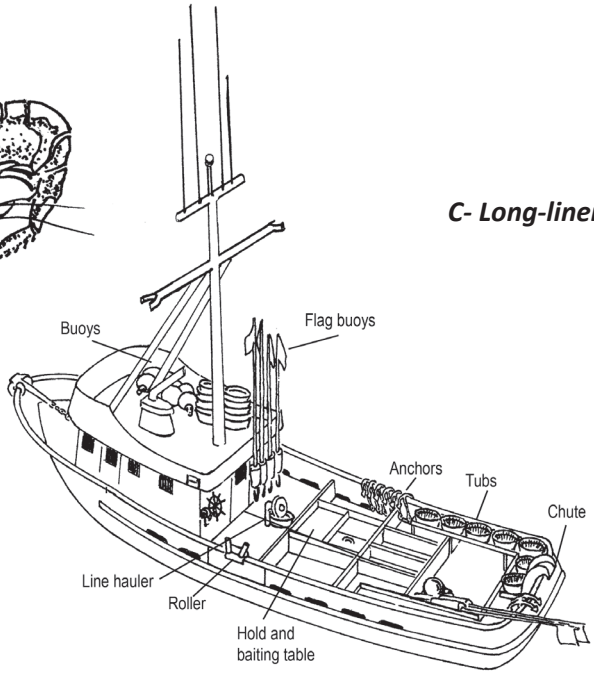
***Albacore tuna***



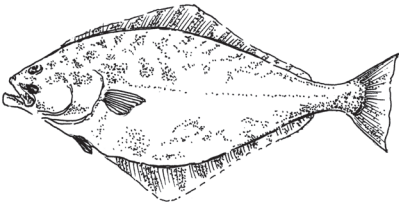
**Pacific pink shrimp**



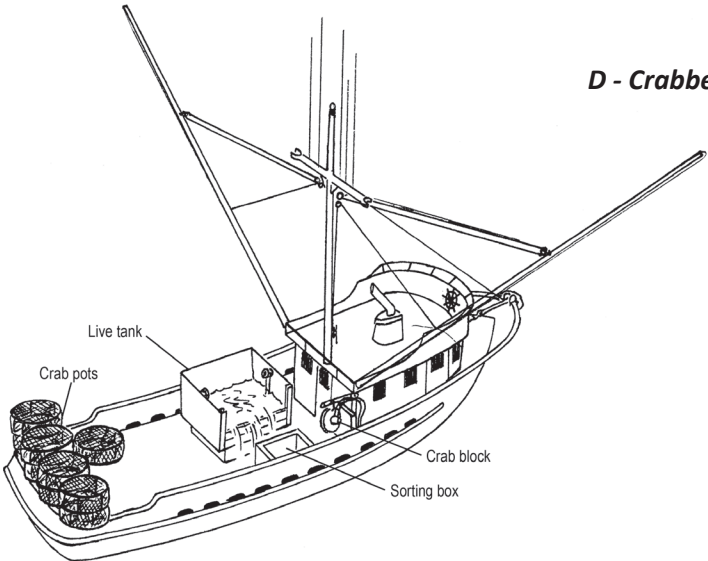
**C- Long-liner**



**Halibut**



**D - Crabber**





This tasty crustacean  
Is a treat from the sea.  
The third letter of its name  
Is clue number 3.

Walk left on the wooden boardwalk.  
Look at the boats on your right.  
This is a working waterfront;  
It's busy all day and all night.

Commercial fishing in Newport  
Brings in money at a rate  
That surpasses the tourism industry.  
It's one of the largest ports in the state.

As you walk, look out  
At the boats once again.  
Can you name some of the catch  
These vessels bring in?

Crab, tuna, halibut,  
Pink shrimp, and rockfish, too.  
Lingcod, Pacific whiting,  
Salmon and sablefish, to name a few!

Along the bayfront  
There are stores and shops.  
Fishermen can buy supplies  
Or put up their feet for a stop.

Now find the arch  
That says "Port Dock 5."  
Use the pictures on the earlier pages  
To ID the boats before your eyes.

Can you see a long-liner?  
What about a shrimping boat?  
Some boats may be rigged for tuna;  
Some hold crab pots afloat.

Some vessels may have  
More than one type of gear.  
This makes it easier  
To keep fishing all year.

**QUESTION for the Curious**  
*What's the difference between  
trawler and a troller?*

Look at the drawings and find  
The trawler with wooden “doors.”  
This boat has a big net  
That it uses offshore.

What kind of seafood  
Does this boat pursue?  
The letter next to the name of this boat  
Is your number 4 clue.

Before leaving Port Dock 5  
Look across the street to see  
The name of a museum  
Below numbers 333.

Exhibits inside are about  
People and the ocean blue.  
The letter part of its logo  
Is your number 5 clue.

But for now, continue east  
On the wooden boardwalk...  
Cross the driveway, look down,  
Find a special sidewalk.

The job of a fisherman  
Is a dangerous one to do.  
Survival suits are on board  
There's one for each of the crew.

We lose two or three  
Fishermen each year.  
Engraved in this sidewalk  
Are names we hold dear.

Follow the names to the sign  
For the seventh dock on the bay.  
The most common vowel on the sign  
Is clue number 6, Hooray!



Turn right at the sign  
To see quite near  
A parking lot full  
Of crab pots and gear.

These traps are lowered  
To the sandy sea floor,  
Where unsuspecting crabs  
Walk in through a door.

Look closely at a crab pot.  
See a line and a float.  
The markings and colors  
Match up to a certain boat.

Usually crab season  
Begins December 1st.  
Crabbers catch them then quickly  
'Til their boats almost burst!

At the Port of Newport office,  
Stand out in front.  
Find the object you've spelled  
And next to it, hunt!

When you've found the Quest Box,  
Stamp your book; sign your name.  
Then re-hide the box  
So others can play this game.

*Fill in the boxes with the answers to the clues to solve the Quest.*

|                      |                      |                      |                      |                      |                      |
|----------------------|----------------------|----------------------|----------------------|----------------------|----------------------|
| <input type="text"/> | <input type="text"/> | <input type="text"/> | <input type="text"/> | <input type="text"/> | <input type="text"/> |
| <b>4</b>             | <b>3</b>             | <b>1</b>             | <b>5</b>             | <b>6</b>             | <b>2</b>             |

*When you've found the Quest Box, sign your name and stamp the back of your book to mark your accomplishment. Don't forget to seal the box tightly and return it to its hiding place for the next person to find!*

*If you enjoyed this Quest, check out *The Oregon Coast Quest Book 2023-24 Edition*, which contains maps and directions for this Quest and 29 other clue-directed hunts across seven counties. For more information and to find a bookseller, visit [seagrant.oregonstate.edu/quests](http://seagrant.oregonstate.edu/quests).*