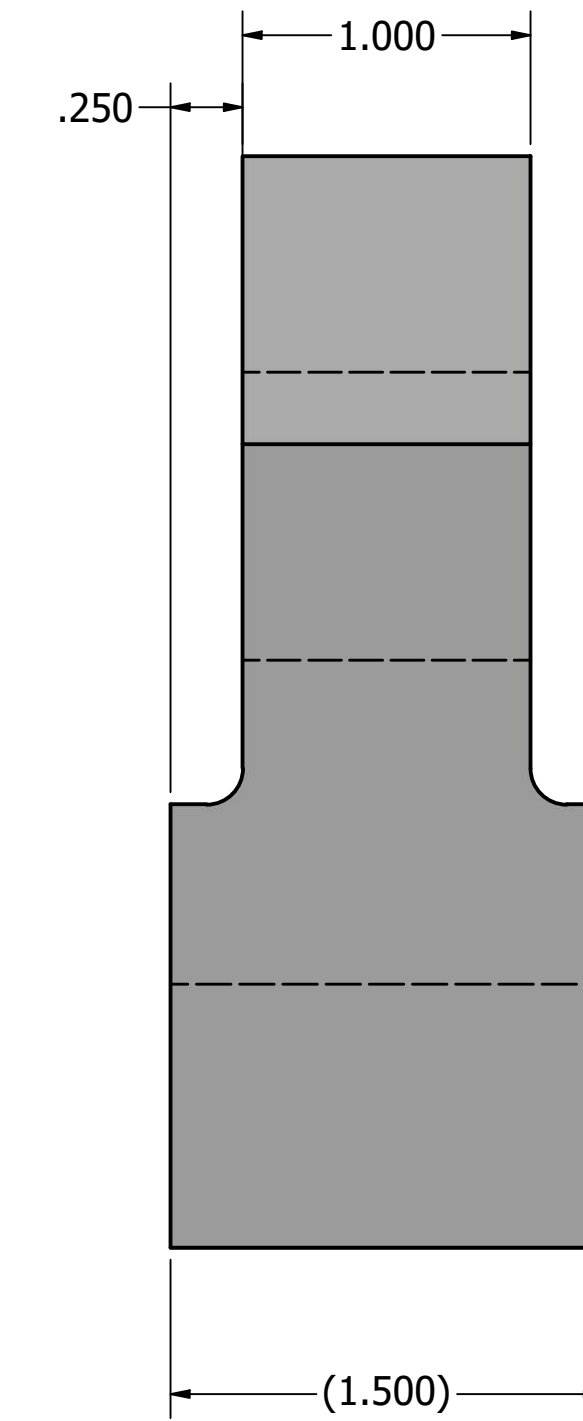
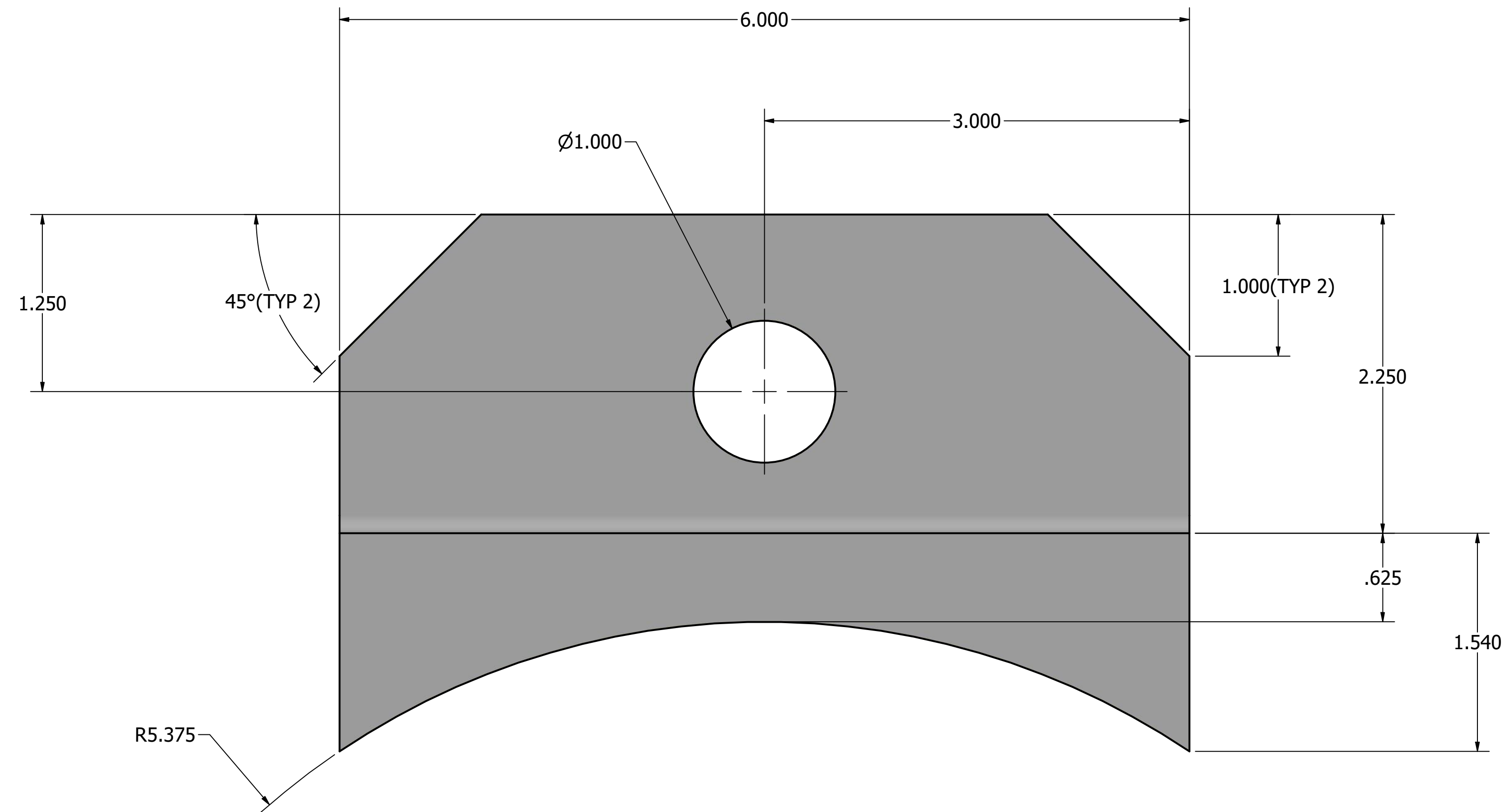
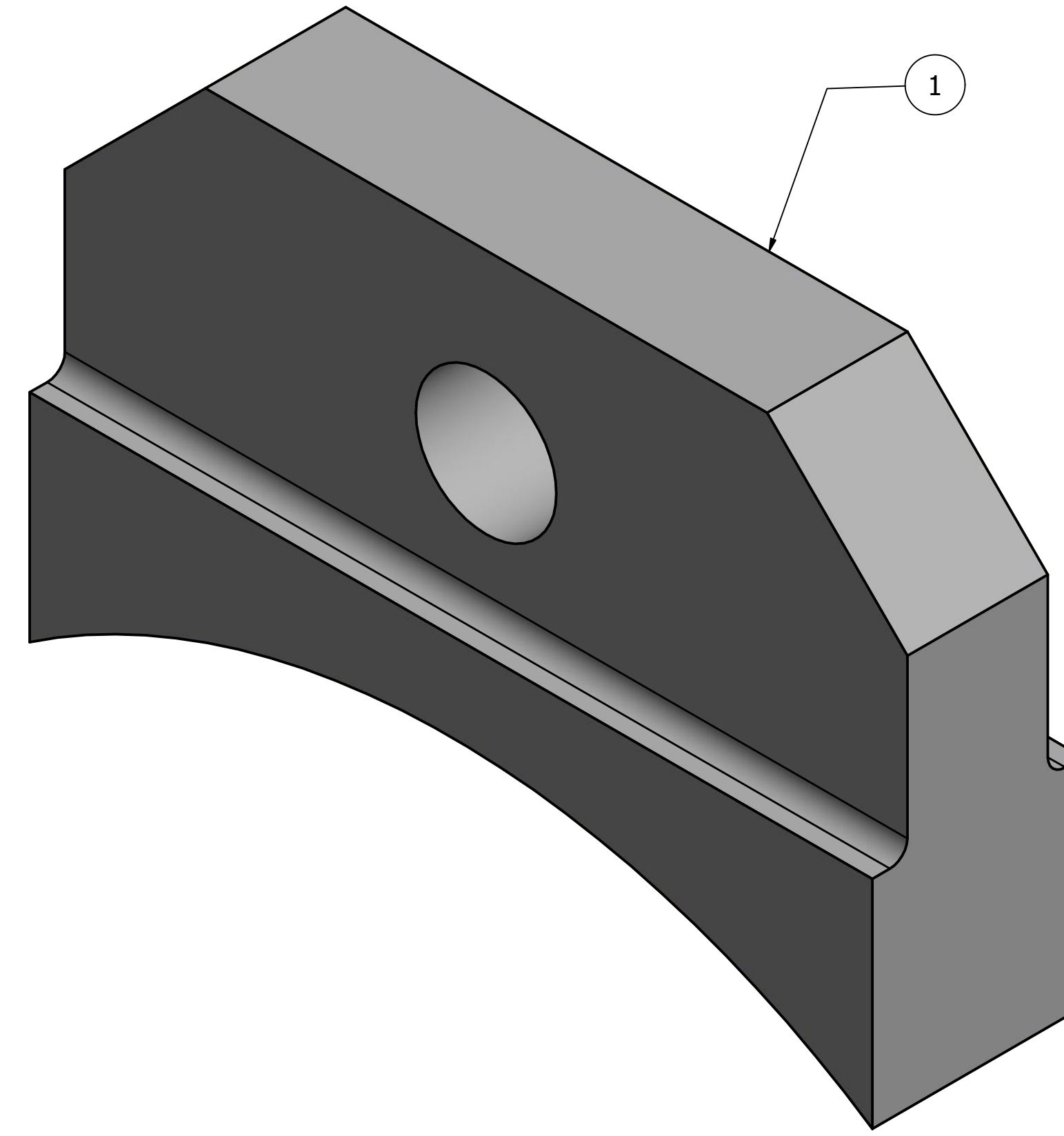
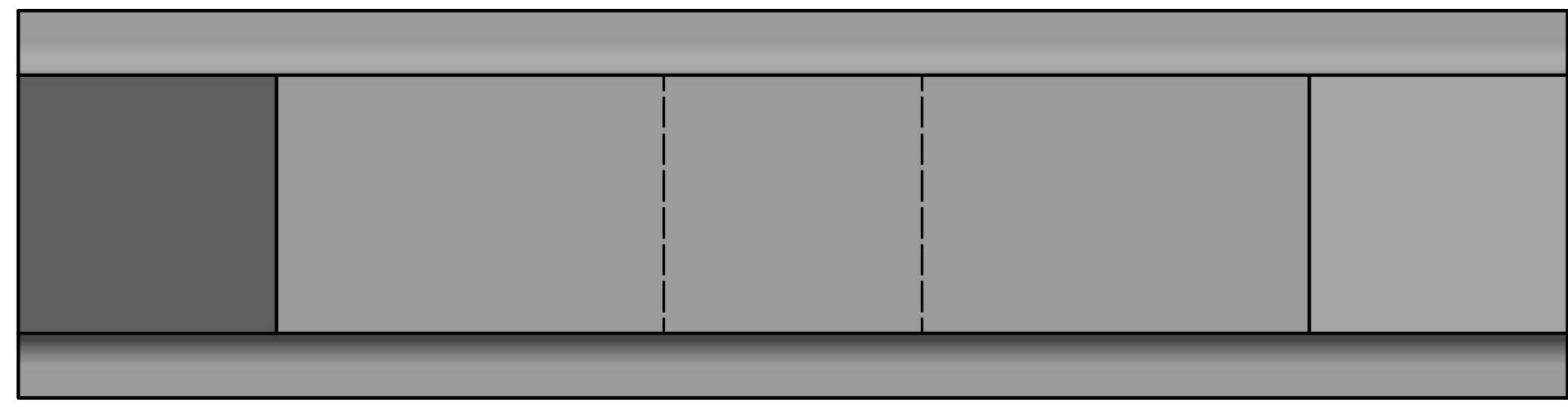


PARTS LIST			
ITEM	QTY	PART NUMBER	DESCRIPTION
1	1	29010010	10" CUSTOM ATTACHMENT BLOCK FROM 1-1/2" HDPE SHEET



THIS DRAWING IS INTELLECTUAL PROPERTY OF ISCO INDUSTRIES, INC. ("ISCO"). IT IS INTENDED FOR THE IDENTIFICATION OF THE GOOD(S) DEPICTED AND SHALL NOT BE CIRCULATED OR REPRODUCED WITHOUT PERMISSION FROM AN AUTHORIZED AGENT OF ISCO. THE USE OF THIS DRAWING IS NOT INTENDED TO REPLACE THE EVALUATION, JUDGMENT AND/OR OPINION OF A LICENSED PROFESSIONAL AND THE USER OF THIS DRAWING EXPRESSLY ASSUMES AND RELEASES ISCO FROM ALL RISK AND LIABILITY ASSOCIATED THEREWITH. THE GOODS DEPICTED IN THIS DRAWING ARE SUBJECT TO ISCO'S STANDARD TERMS AND CONDITIONS OF SALE SET FORTH AT WWW.ISCO-PIPE.COM/TERMS-AND-CONDITIONS.ASPX.

**TOLERANCE STANDARDS AS MEASURED AT AMBIENT TEMPERATURE:**  
 -ISCO SHALL MAINTAIN A FABRICATION TOLERANCE OF ± 1/2" FOR ALL DIMENSIONS SHOWN.  
 -ISCO SHALL MAINTAIN A FABRICATION TOLERANCE OF ± 2° FOR ALL ANGLES SHOWN.  
 -(X'X') MARKS A DIMENSION THAT IS FOR REFERENCE ONLY.  
 -(NC) MARKS A DIMENSION THAT IS NOT CRITICAL AND REQUIRES NO NOTIFICATION OF DEVIATION BY FABRICATOR.  
 -SPECIFIC TOLERANCES MAY BE PROVIDED BY CUSTOMER BUT MUST BE APPROVED BY ISCO INDUSTRIES AND NOTED ON DRAWING PRIOR TO FABRICATION.  
 \*UNLESS OTHERWISE SPECIFIED.

**GENERAL NOTES:**  
 -STRUCTURE OUTLETS NOT DESIGNED AS ANCHOR POINTS FOR CONNECTED PIPING.

REVISION HISTORY			
REV	DESCRIPTION	DATE	BY
1	DIMENSIONAL CHANGES	4/2/19	BS

TESTING	
REQUIRED: NONE	
TYPE: N/A	
PRESSURE: N/A	
DURATION: N/A	
APPROVED BY:	DATE:
WO #:	DATE:

**ISCO**  
 www.isco-pipe.com 1-800-345-4726  
 DRAWN BY: BRETT SILLS DATE: 3/29/2019  
 REVIEWED BY: KEVIN KOCH DATE: 3/29/2019

CUSTOMER NAME: <b>PORT OF NEWPORT</b>	
DRAWING TITLE: <b>10" CUSTOM ATTACHMENT BLOCK</b>	
SIZE: D	DWG FILE LOCATION: DN/CG/PORT OF NEWPORT-032919
TERRITORY REPRESENTATIVE: CESAR GALLARDO	SHEET 1 OF 1