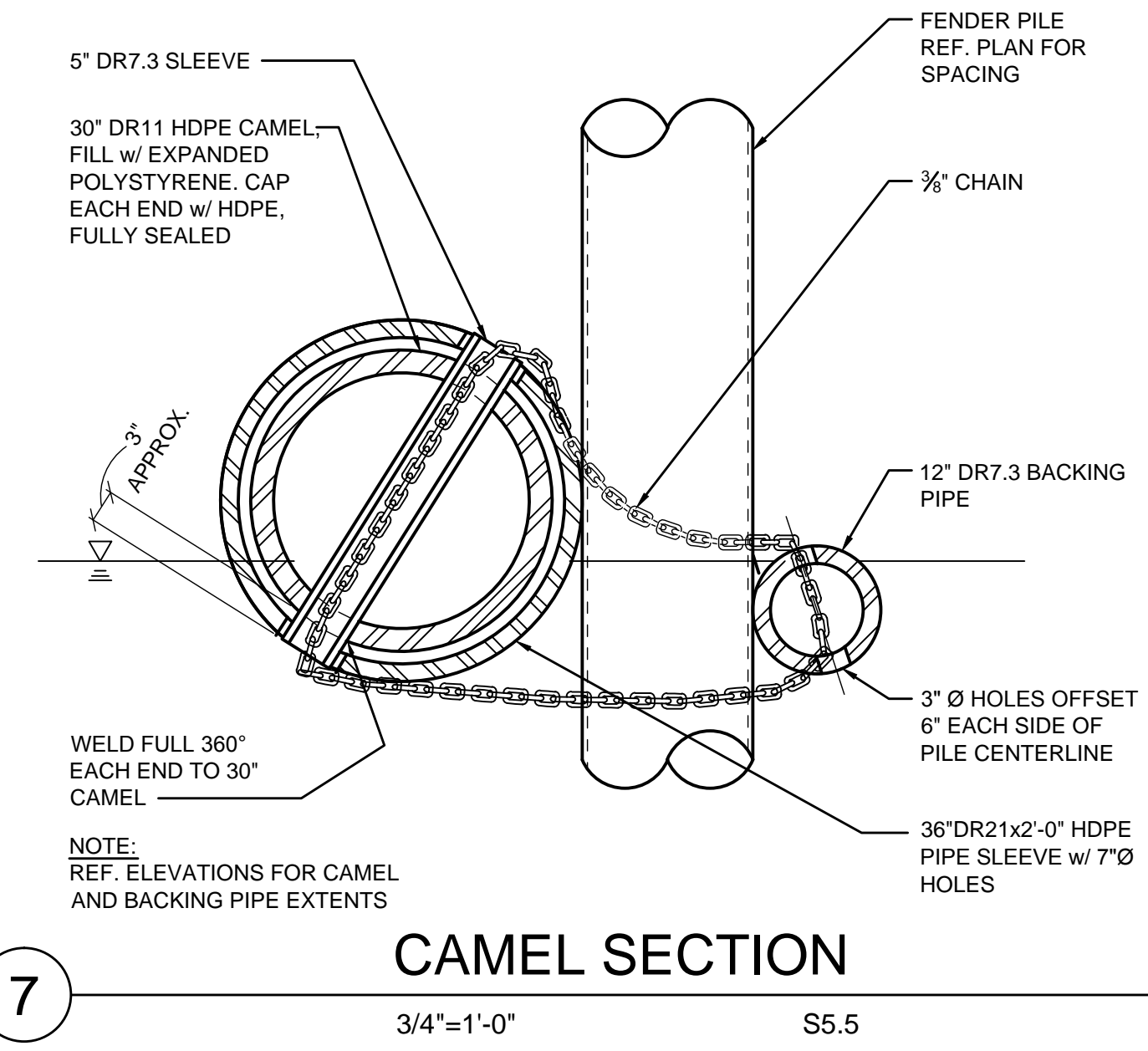
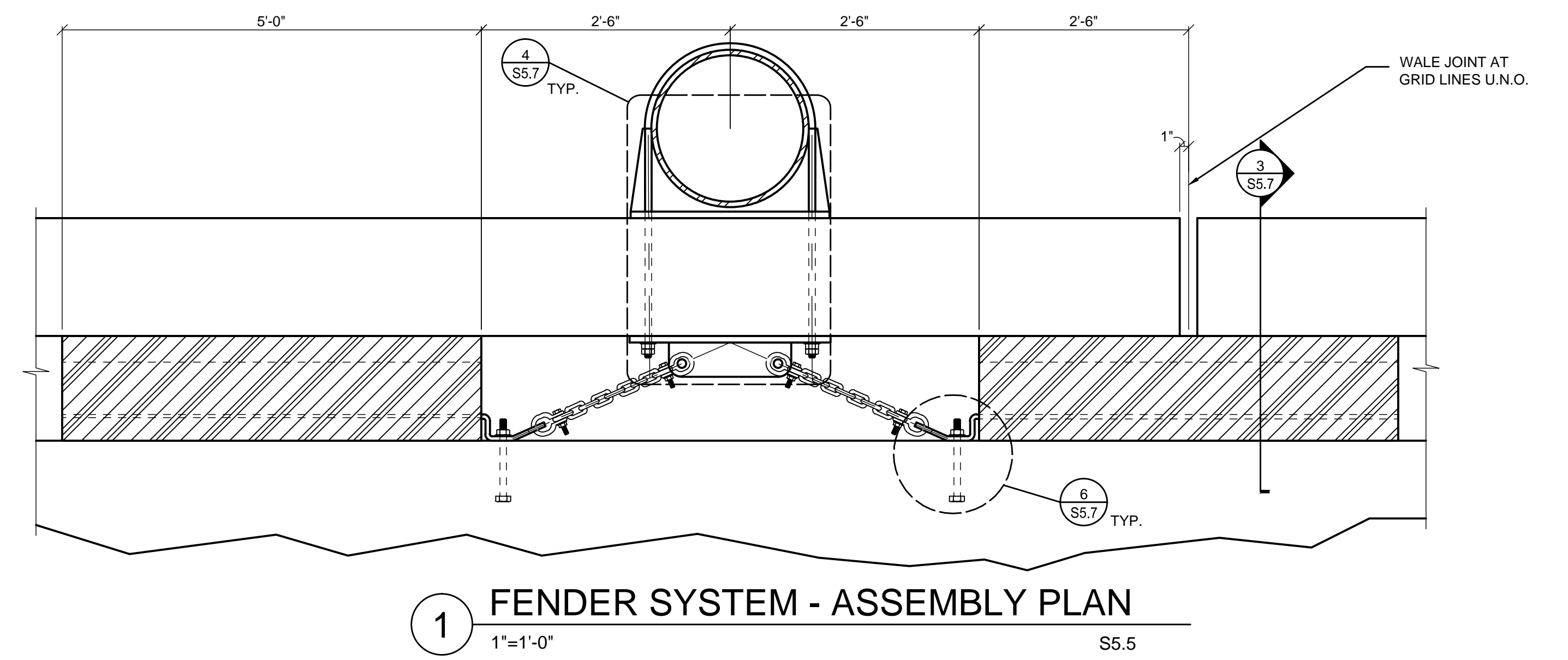


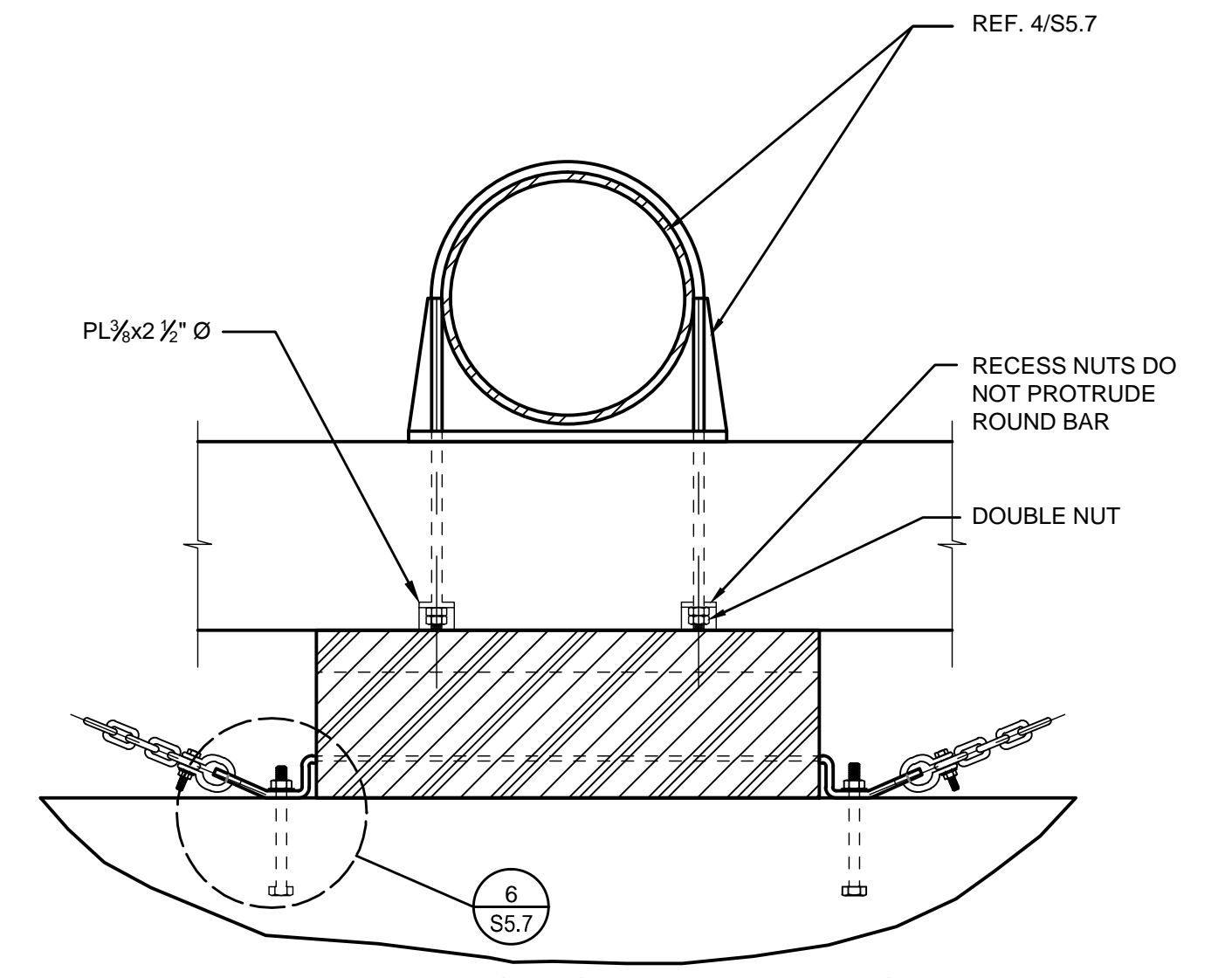
11  
3/4"=1'-0" S5.6



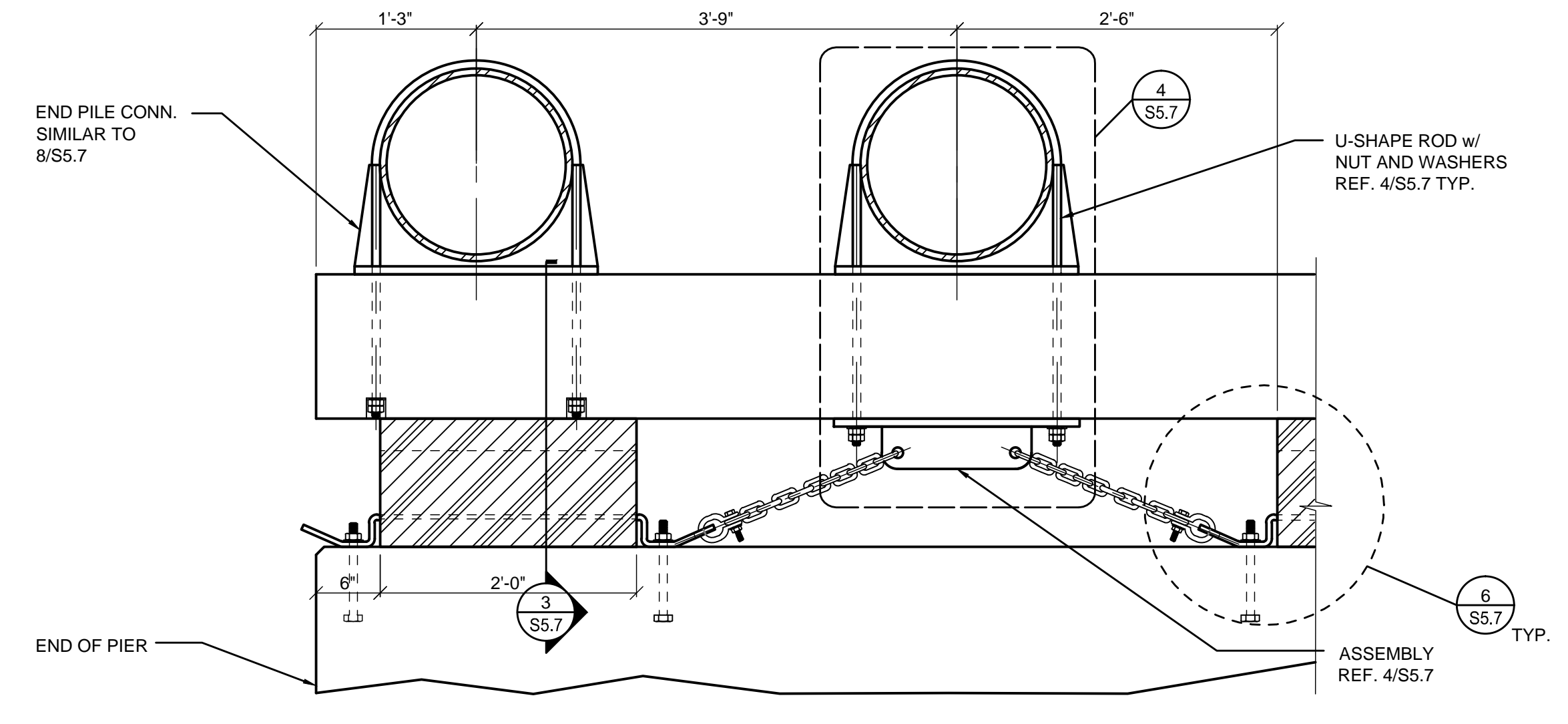
7  
3/4"=1'-0" S5.5



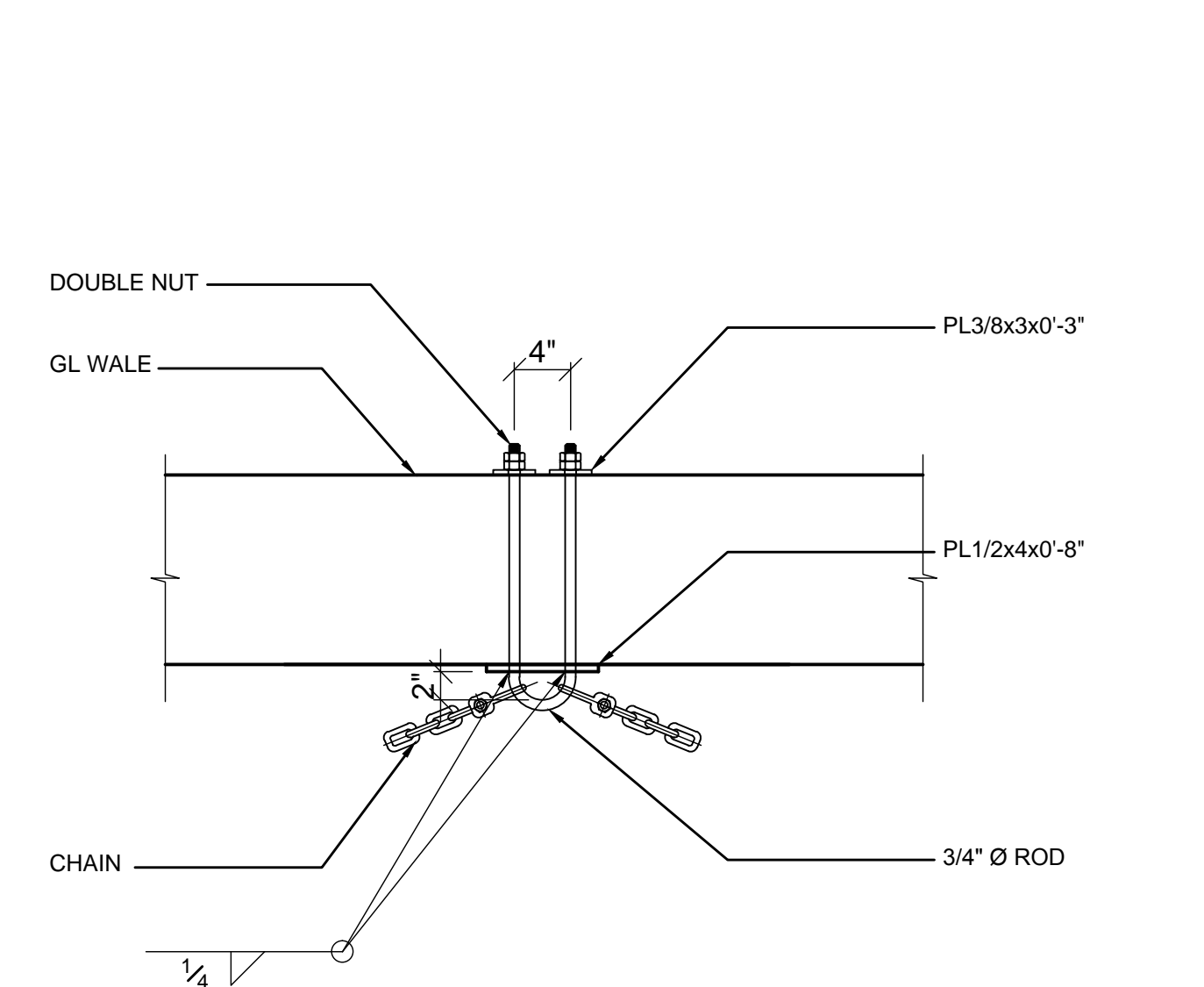
1  
1"=1'-0" S5.5



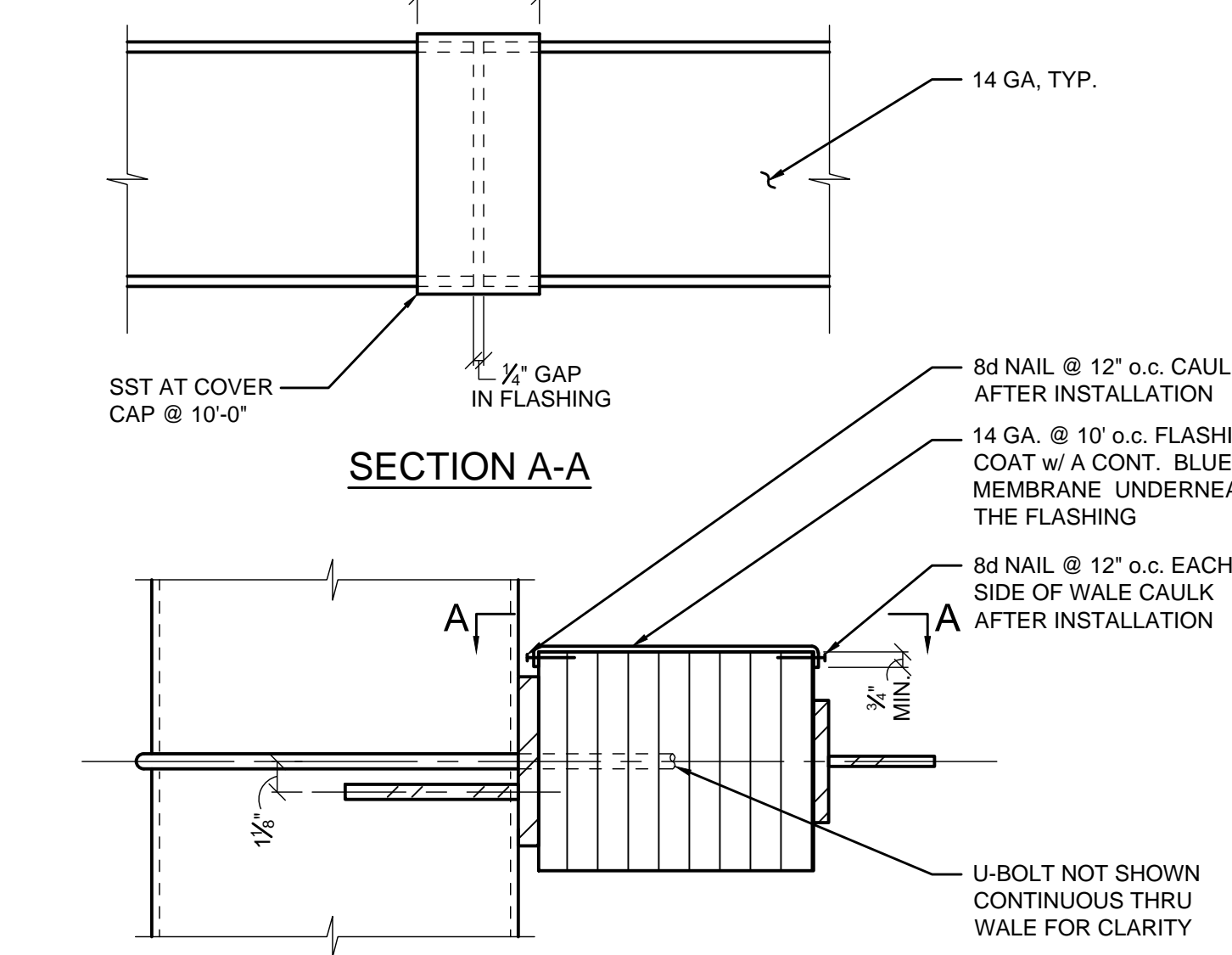
8  
1"=1'-0" S5.5



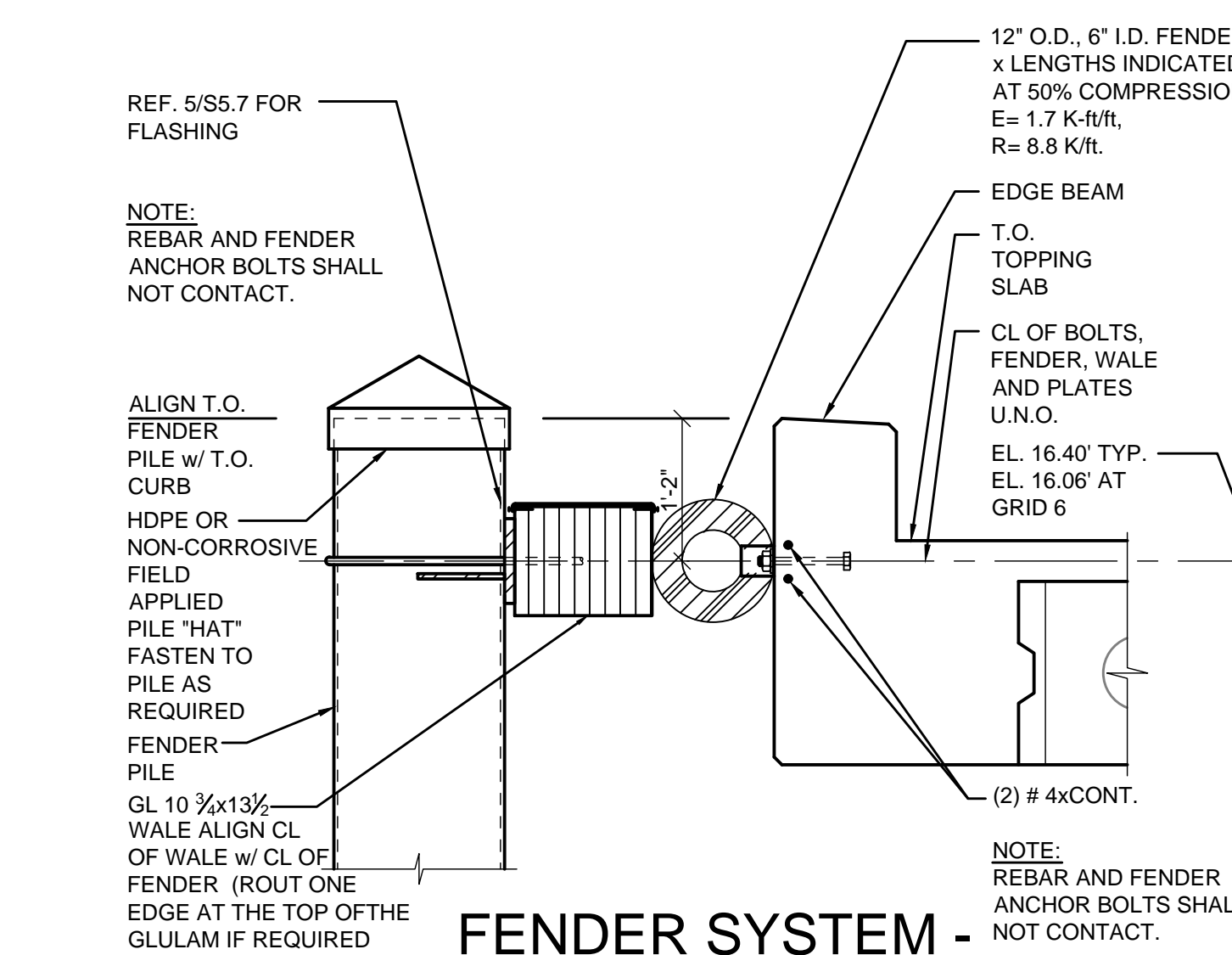
2  
1"=1'-0" S5.5



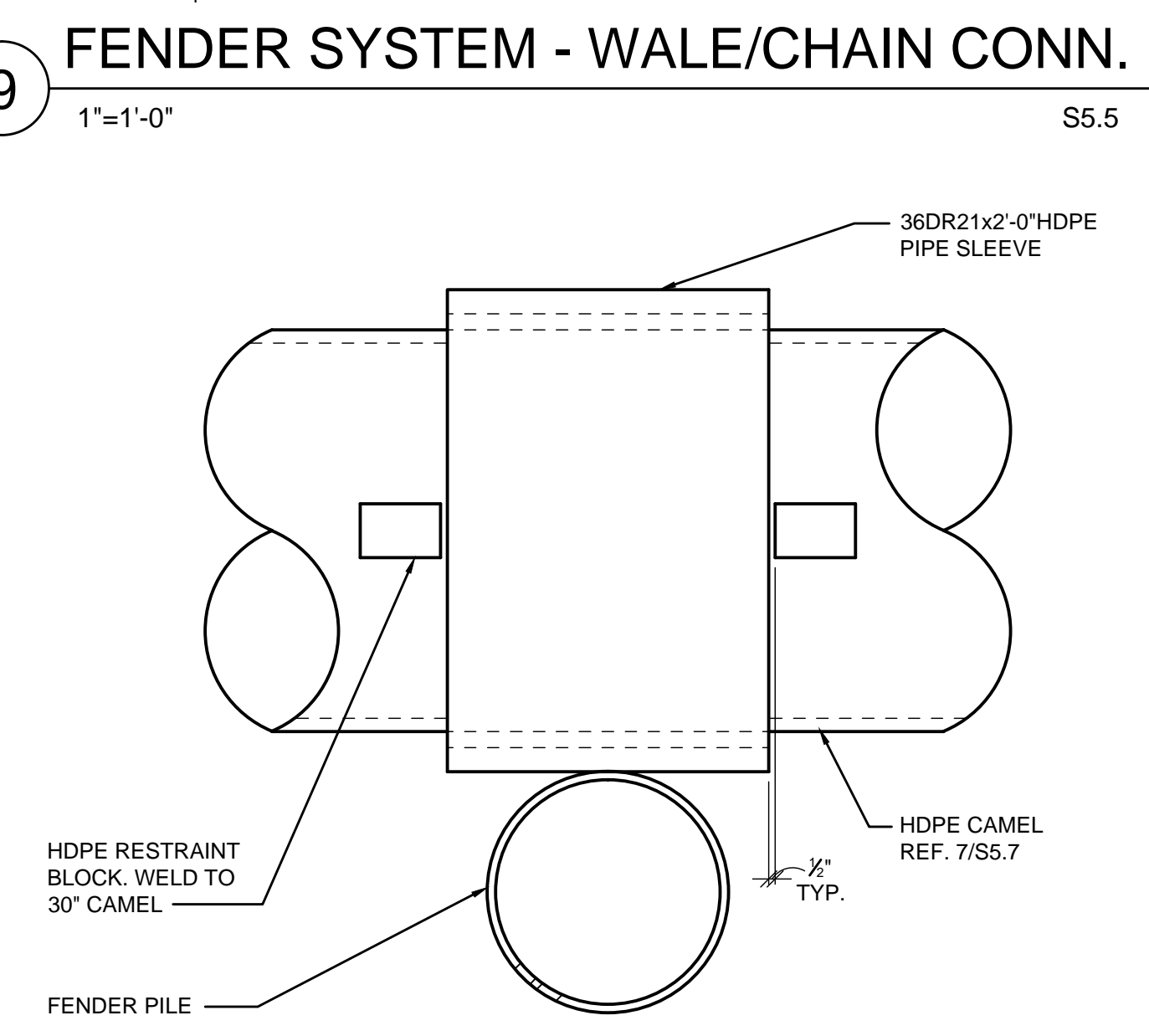
9  
1"=1'-0" S5.5



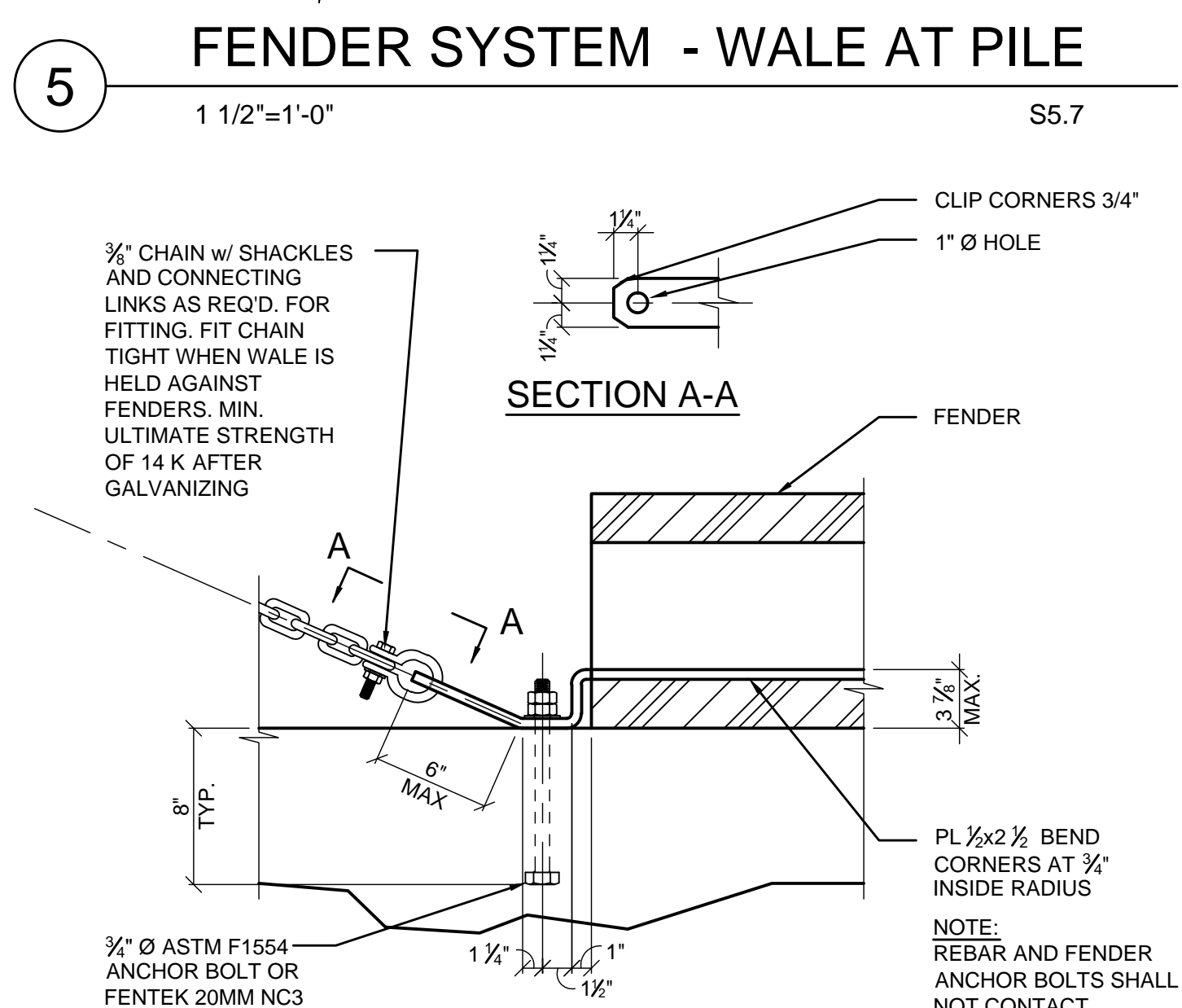
5  
1 1/2"=1'-0" S5.7



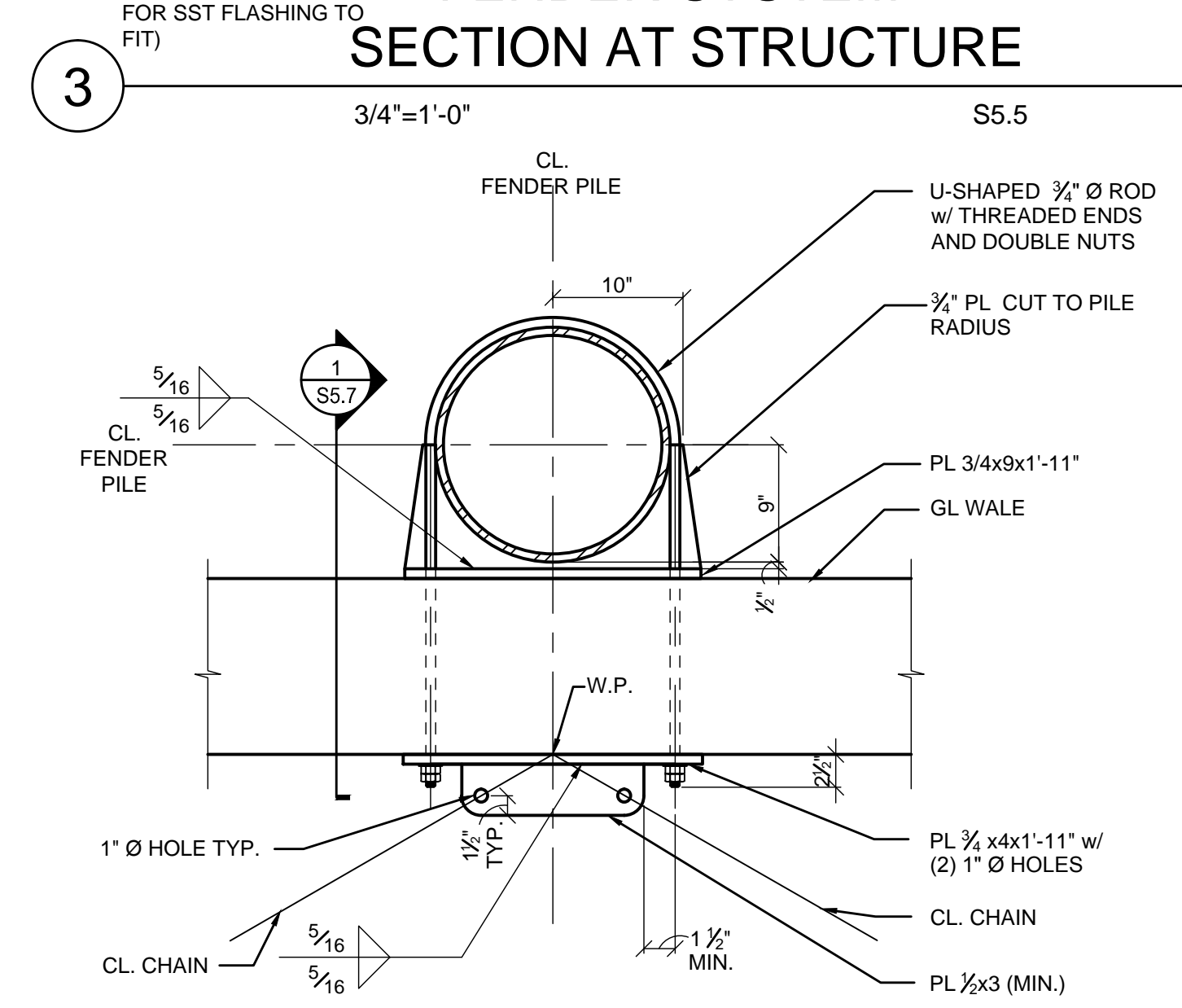
3  
3/4"=1'-0" S5.5



10  
1"=1'-0" S5.5

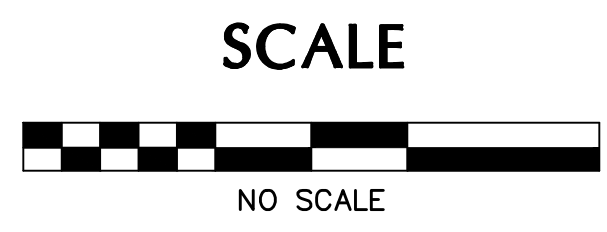


6  
1 1/2"=1'-0" S5.7



4  
1"=1'-0" S5.7

File: G:\3\VA\2008\9644 - NOAA\Warr\208644-p-s5.7.dwg TAB:Layout  
Printed: 8/22/11 at 2:54pm By: ccampbell  
30x42 XREF: 228644.rvt



**RECORD DRAWINGS**  
 THESE RECORD DOCUMENTS HAVE BEEN PREPARED BASED ON INFORMATION PROVIDED BY OTHERS. THE CONSULTANT HAS NOT VERIFIED THE ACCURACY AND/OR COMPLETENESS OF THIS INFORMATION AND SHALL NOT BE RESPONSIBLE FOR ANY ERRORS OR OMISSIONS THAT MAY RESULT FROM ERRONEOUS INFORMATION PROVIDED BY OTHERS.  
 JOB No.: 208644  
 DESIGNED BY: -  
 DRAWN BY: CDC  
 CHECKED BY: NJF  
 PLOT DATE: 8/24/11 2:54pm  
 PLOTTED BY: ccampbell  
 DWG NAME: 208644-p-s5.7.dwg  
 TAB NAME: Layout

PORT OF NEWPORT  
 SHEET NO. **S5.7**  
 NOAA  
 MARINE OPERATION CENTER - PACIFIC  
 IN WATER CONSTRUCTION  
 FENDER DETAILS  
 SHEET OF  
 RECORD NO. 208644

PROPERTY OF THE UNITED STATES GOVERNMENT  
 FOR OFFICIAL USE ONLY  
 PROPERLY DESTROY DOCUMENTS WHEN NO LONGER NEEDED  
 RECORD DRAWINGS - AUGUST 31, 2011