



600 S. E. BAY BOULEVARD NEWPORT, OREGON 97365 (541) 265-7758 FAX (541) 265-4235 [www.portofnewport.com](http://www.portofnewport.com)

## For Immediate Release

January 27, 2011

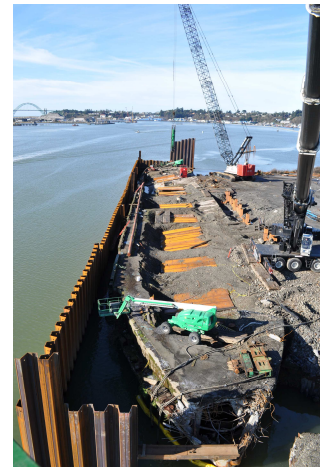
### Contact:

Don Mann, Port of Newport  
541-265-7758

### Port Commission Briefed on Construction Updates for the NOAA MOC-P Homeport and International Terminal Renovation Projects

NEWPORT – The Port Commission was briefed on the progress of the International Terminal Renovation project at its monthly meeting Tuesday, January 25, 2011.

Senior project manager Frank Berg of DAY CPM Services advised the Commission that the in-water work is the priority and is progressing. The cofferdam being built around the SS Pasley may be in place by the end of the in-water permit, February 15<sup>th</sup>; however, a request for an extension of the permit is being drafted. The cofferdam is approximately 75% complete.



Mr. Berg also presented Amendment #8 to the construction contract with Natt McDougall Company (NMC), the project's construction manager / general contractor (CM/GC). Amendment #8 will allow for the remediation of the Pasley, is valued at +/- \$2.6 million and includes \$100,000 for contingency. Remediation of the Pasley and Hennebique will occur simultaneously over a five month period and be complete in August. Slides of the sheet piling installation were presented showing the containment cell progress nearing the shoreline at the stern and the completed sheet piling between the bows of the Hennebique and the Pasley.



Joshua Dodson, Principal with DAY CPM Services updated the Commission on the NOAA Homeport project. Mr. Dodson noted that the project continues to be on time and within budget. He reported that the contractor has driven all the pier piles and the pier is now over halfway complete. The contractor is also installing the concrete beam spans between the pile caps and commencing

*Serving the Maritime and Recreational Communities*

Newport International Terminal (541) 265-9651

Newport Marina at South Beach (541) 867-3321

to pour the final exposed concrete topping slab at the eastern end of the pier. Dredging around the NOAA dock is planned to be complete by the end of next week. By mid-February, fender piles along the side of the dock are expected to be completed.

Work for the Office Building and Warehouse is in the “finishing stage”. Millwork is being installed as well as finish electrical work and final plumbing work at the office building. May 1<sup>st</sup>, 2011 is the scheduled move-in date for the Port’s tenant, NOAA.

In anticipation of increased public interest, project information is updated on the Port’s web site ([www.portofnewport.com](http://www.portofnewport.com)) which includes a Frequently Asked Questions page as well as an online comment form.

For more information about these projects, contact General Manager Don Mann at the Port of Newport, 541-265-7758, or visit the Port’s Web site at [www.portofnewport.com](http://www.portofnewport.com). Comments can be submitted at anytime by emailing [terminalproject@portofnewport.com](mailto:terminalproject@portofnewport.com).

*### End ###*